



SIDS ASPIRATIONS

Marshall Islands context

Glen Joseph

**RFMO Management of Tuna
Fisheries Workshop**

Brisbane, Australia

JUNE 29- JULY 1, 2010

The Fishery: An Integrated Whole

- Necessary to view all aspects of the fishery in decision-making process
- Decisions in one area impact other areas
- PNA Members have different goals

REVIVAL OF OLD INITIATIVES, WITH NEW PERSPECTIVE/ or OLD perspective with NEW initiatives...



Conservation

Sovereignty

Economics

The Fishery: An Integrated Whole



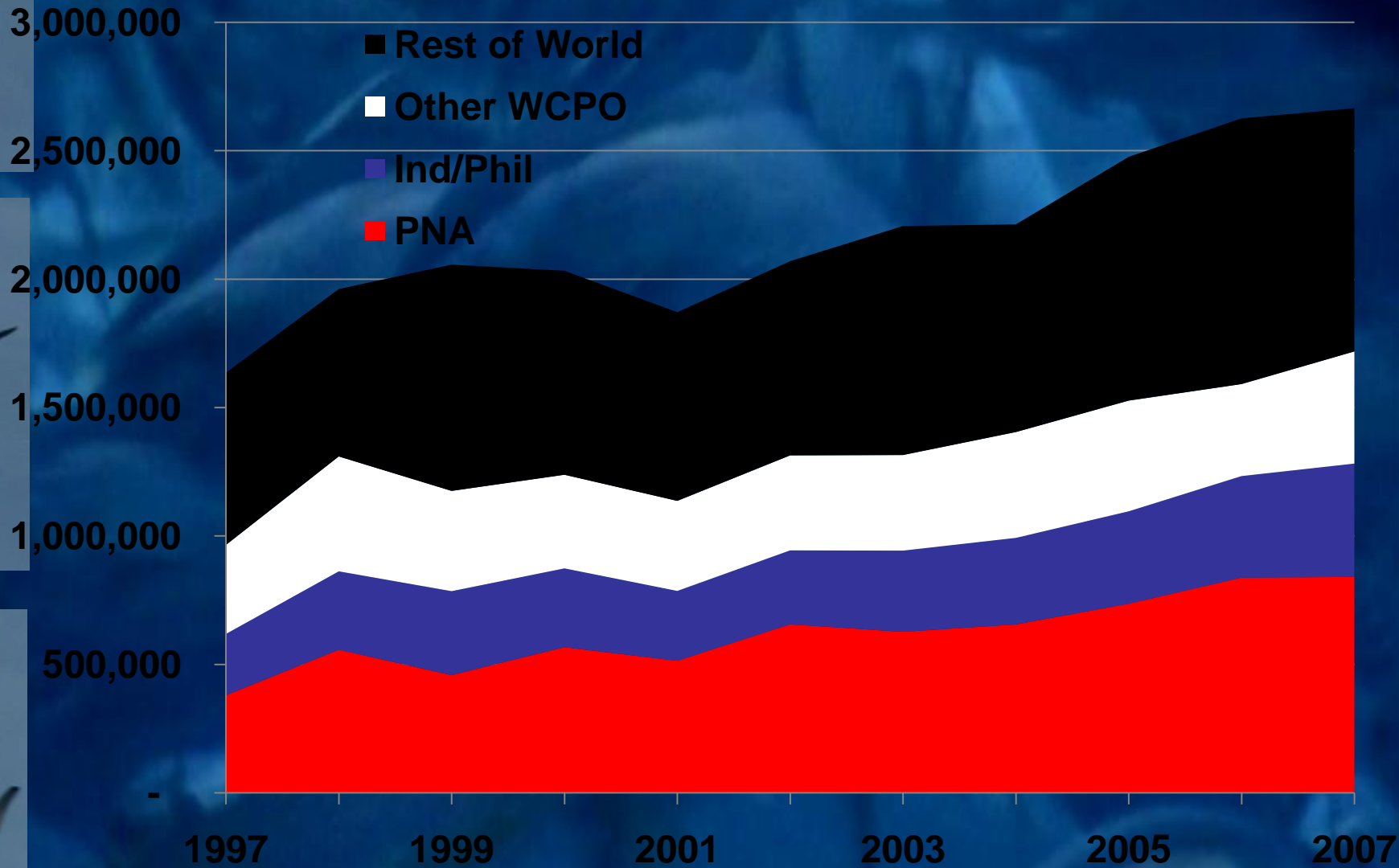
SOVEREIGNTY

CONSERVATION

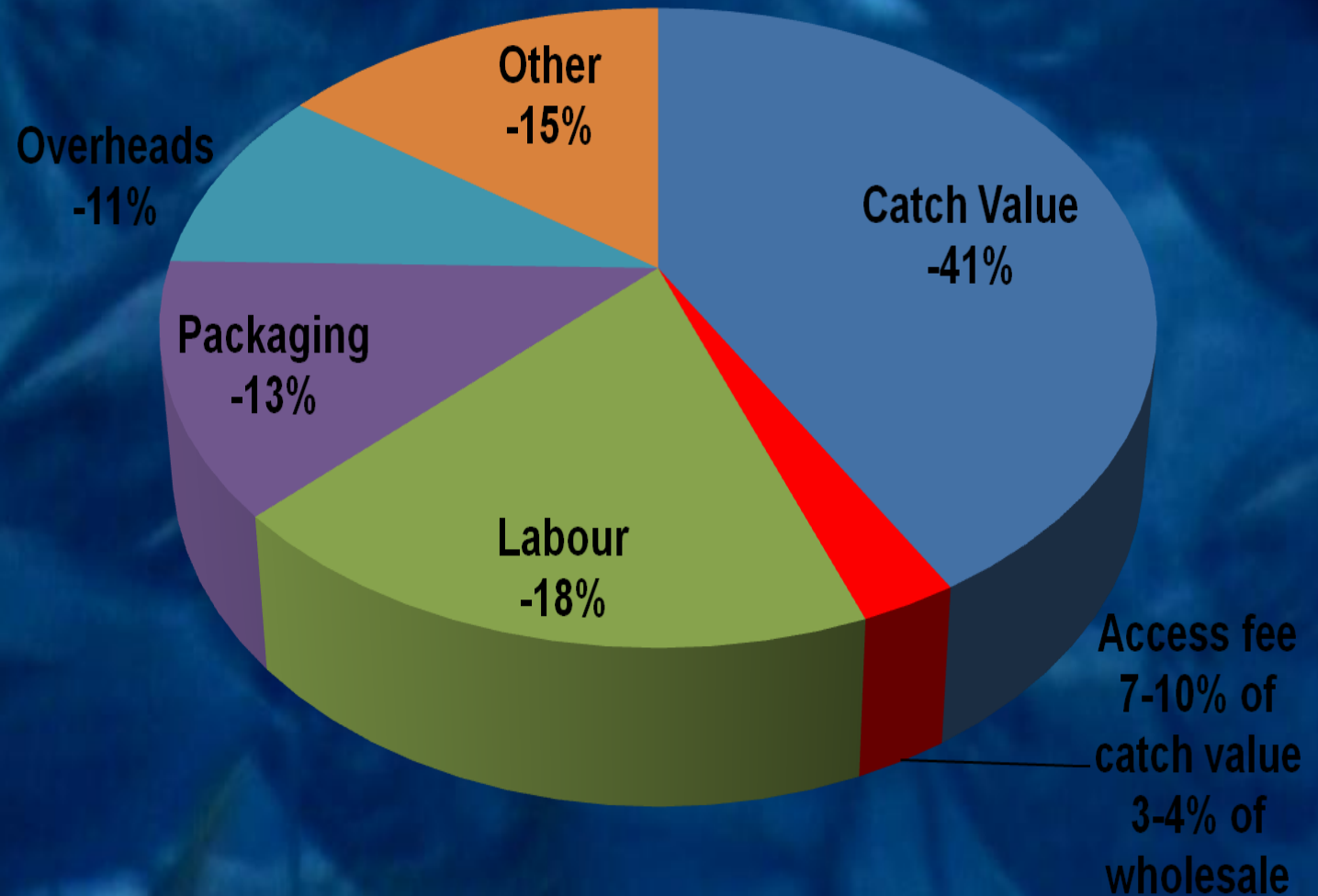
ECONOMICS



The Fishery: An Integrated Whole



The Fishery: An Integrated Whole



THE WHOLE CAN

The Fishery: An Integrated Whole

QUESTIONS (some)

- The Tuna resource and the Coastal states
 - Is it separate?
 - NO...
- The High Seas and In-zone
 - Is it separate?
 - YES...
- The Value of the Fishery and the return to island states
 - Is it Fair?
 - NO...
- SIDS aspirations to develop and benefit sustainably from the tuna resources
 - Is it Achievable?
 - YES...



The Fishery: An Integrated Whole

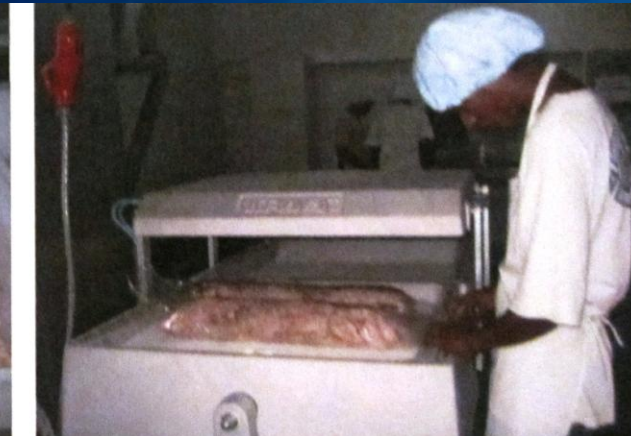
STRATEGY (some)

- Fisheries as a cornerstone of national development strategy with energy, telecommunications and tourism – A SMALL NATION IN BUILDING.
- Access through PNA cooperation to a world class resource – value adding zones with common interests in the sustainability of the resource.
- Looking at the WHOLE PIE.... WITH STRATEGIC PARTNERSHIP WITH DEVELOPED NATIONS INDUSTRY
- Value-adding Domestic Industry Development:
 - Transshipment
 - Bunkering
 - Loining/processing
 - Management services
 - Branding and marketing



The Fishery: An Integrated Whole

IT CAN BE DONE



The Fishery: An Integrated Whole

Taking Control: PNA Cooperation



- Establishing and maintaining limits
- Sustain the tuna resources
- Setting policies (national, regional and international)
- Enhancing sovereignty
- Protecting rights
- Formulating consensus
- Presenting a united front
- Power through collective bargaining
- Strategic partnership with responsible and economical fishers
- Pursue vertically integrated fisheries economic and development opportunities.

The Fishery: An Integrated Whole

Influencing Outcomes



- More participation in all parts of the tuna value chain
- Tailoring development to meet national needs
- Sovereignty and conservation to drive economic outcomes
- Regional strengths translate to global influence
- **FROM WHERE**
 - access fee
- **TO WHERE**
 - Access fee, transshipment, processing, employment, economic spin
- **BEYOND**
 - Economic Independence

The Fishery: An Integrated Whole

Marshall Islands

The Past (1980-1990s)

- Foreign access fishing vessels (PS, LL, P & L)

The Present (2000-2009)

- Foreign access fishing vessels (PS, LL, P & L)
- Transshipping activity in Majuro lagoon
- On-shore tuna fisheries development - domestic and locally-based foreign operations:
 - Koos Fishing Company (PS fishing)
 - Marshall Islands Fishing Company (PS fishing)
 - Marshall Islands Fishing Venture (LL fish base)
 - Pan Pacific Foods (Loining plant)
 - Pan Pacific Fishing

The Present (2010 and beyond)

- The RESOLVES of SIDS Aspirations
- PNA Office
- FFA efforts
- WCPFC and the International response









Kemmel Tata...

